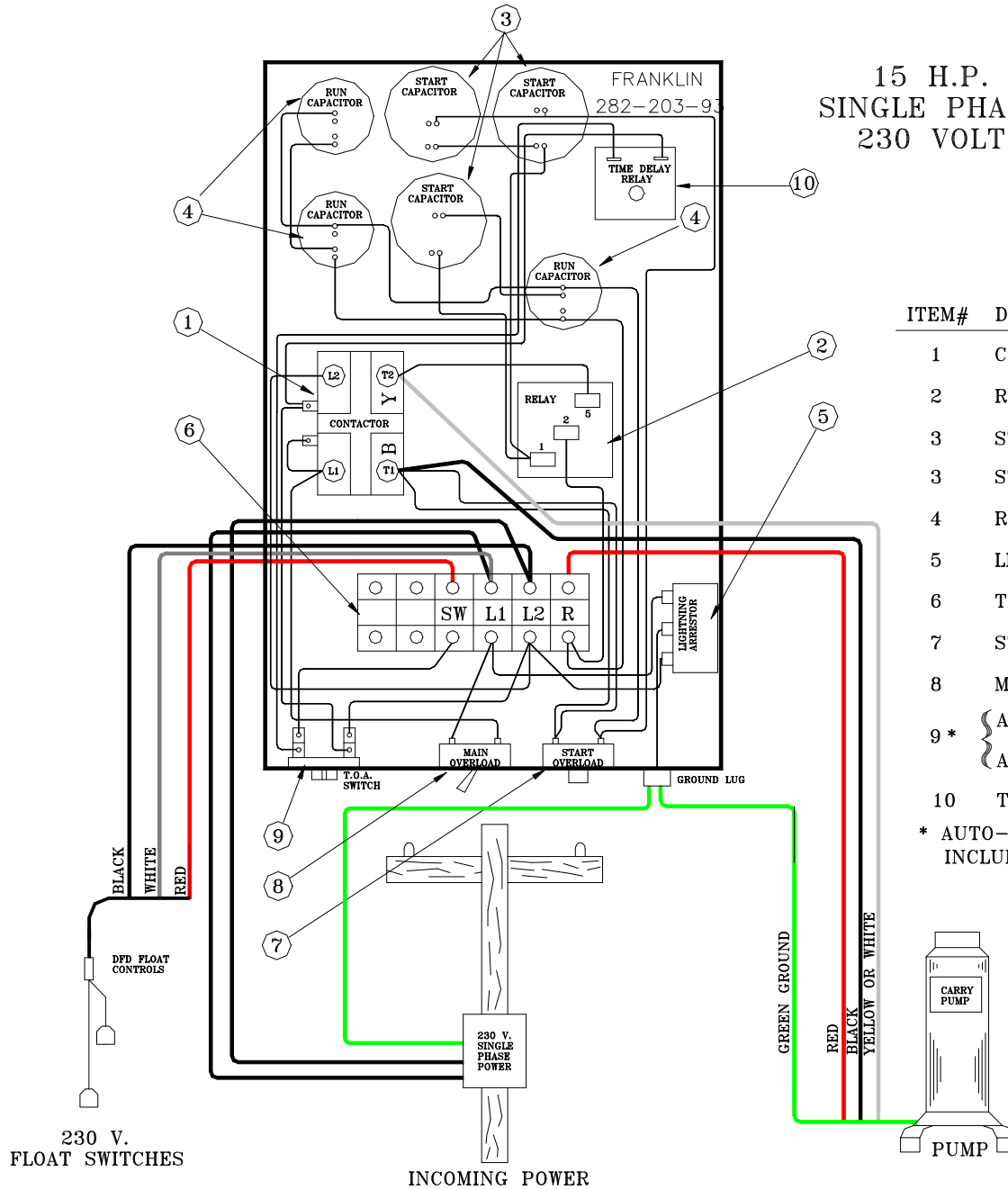


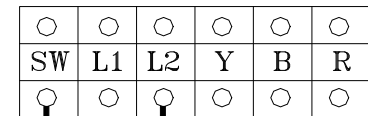
# CARRY MANUFACTURING, INC. ELECTRICAL PANEL CONTROL BOX

15 H.P.  
SINGLE PHASE  
230 VOLT



ITEM#	DESCRIPTION	PART#	QTY.
1	CONTACTOR	155 429 101	1
2	RELAY	155 031 601	1
3	START CAPACITOR	275 463 122	1
3	START CAPACITOR	275 468 119	2
4	RUN CAPACITOR	155 327 109	3
5	LIGHTNING ARRESTOR	150 814 902	1
6	TERMINAL BLOCK		1
7	START OVERLOAD	275 406 103	1
8	MAIN OVERLOAD	155 409 102	1
9 *	{ A-O-T SWITCH	SQDZB2BD8	1
	{ A-O-H SWITCH	SQDZB2BD3	1
10	TIME DELAY RELAY	ICM203	1

\* AUTO-OFF-TEST OR AUTO-OFF HAND SWITCH INCLUDED ON DELUX PANELS ONLY



Jumper Wire

If floats are not being used, insert a jumper wire between SW and L2 on the terminal strip.

**CARRY MANUFACTURING, INC.  
ELECTRICAL PANEL CONTROL BOX**

**WARNING!!**

Verify that the power supply voltage matches the motor requirements. The wiring must be hooked up according to the drawing and all connections must be tight. Failure to do so, could result in damage to your system.

**Incoming Power Source - Single phase, 230 volts**

The incoming power is connected to L1, L2 and the ground lug on the control box.

**Float Connections** - Wires are connected as follows: 1) Red wire to SW on terminal strip, 2) White wire to L1 on terminal strip, and 3) Black wire to L2 on terminal strip.

**Float Installation** - grey float on top (pump on), black float on bottom (pump off).

**Pump Connections** - Wires are connected as follows: 1) Yellow/White wire to Y on terminal strip, 2) Black wire to B on terminal strip, and 3) Red wire to R on the terminal strip of the control box.

**CAUTION: Failure to ground the control frame can result in a serious electrical shock hazard if a circuit fault occurs.**

07/08/13



**Contact Carry Manufacturing for technical assistance.**