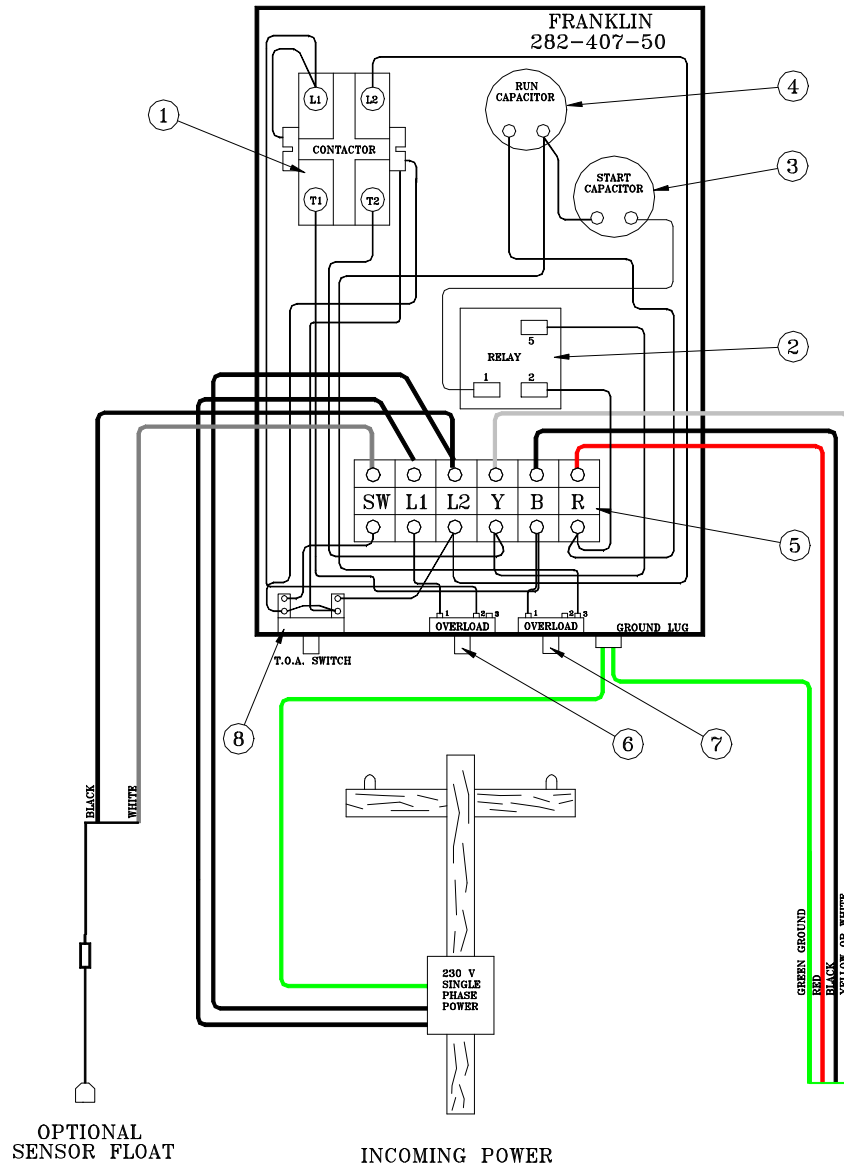
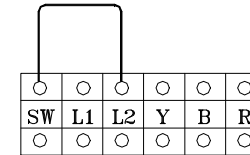


# CARRY MANUFACTURING, INC. ELECTRICAL PANEL CONTROL BOX

3/4 H.P.  
SINGLE PHASE  
230 V.

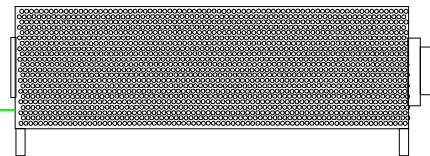


OPTIONAL CONTROL DEVICES MAY  
INSTALLED BETWEEN L2 AND SW  
IF NONE ARE BEING USED INSTALL  
A JUMPER WIRE BETWEEN L2 AND SW

ITEM#	DESCRIPTION	PART#	QTY.
1	CONTACTOR	155 325 102	1
2	RELAY	155 031 102	1
3	START CAPACITOR	275 464 105	1
4	RUN CAPACITOR	156 362 102	1
5	TERMINAL BLOCK		1
6	OVERLOAD MAIN	275 411 113	1
7	OVERLOAD START	275 411 114	1
8*	{ A-O-T SWITCH	SQDZB2BD8	1
	{ A-O-H SWITCH	SQDZB2BD3	1

\* AUTO-OFF-TEST OR AUTO-OFF HAND SWITCH  
INCLUDED ON DELUX PANELS ONLY

.75HP 1 PHASE FOUNTAIN PUMP



**CARRY MANUFACTURING, INC.  
ELECTRICAL PANEL CONTROL BOX**

**WARNING!!**

Verify that the power supply voltage matches the motor requirements. The wiring must be hooked up according to the drawing and all connections must be tight. Failure to do so, could result in damage to your system.

**Incoming Power Source - Single phase, 230 volts**

The incoming power is connected to L1, L2 and the ground lug on the control box.

**Pump Connections** - Wires are connected as follows: 1) Yellow/White wire to Y on terminal strip, 2) Black wire to B on terminal strip, and 3) Red wire to R on the terminal strip of the control box.

**Float Connections** - Wires are connected as follows: 1) White wire to SW on terminal strip, 2) Black wire to L2 on terminal strip.

**CAUTION: Failure to ground the control frame can result in a serious electrical shock hazard if a circuit fault occurs.**

07/17/13



**Contact Carry Manufacturing for technical assistance.**