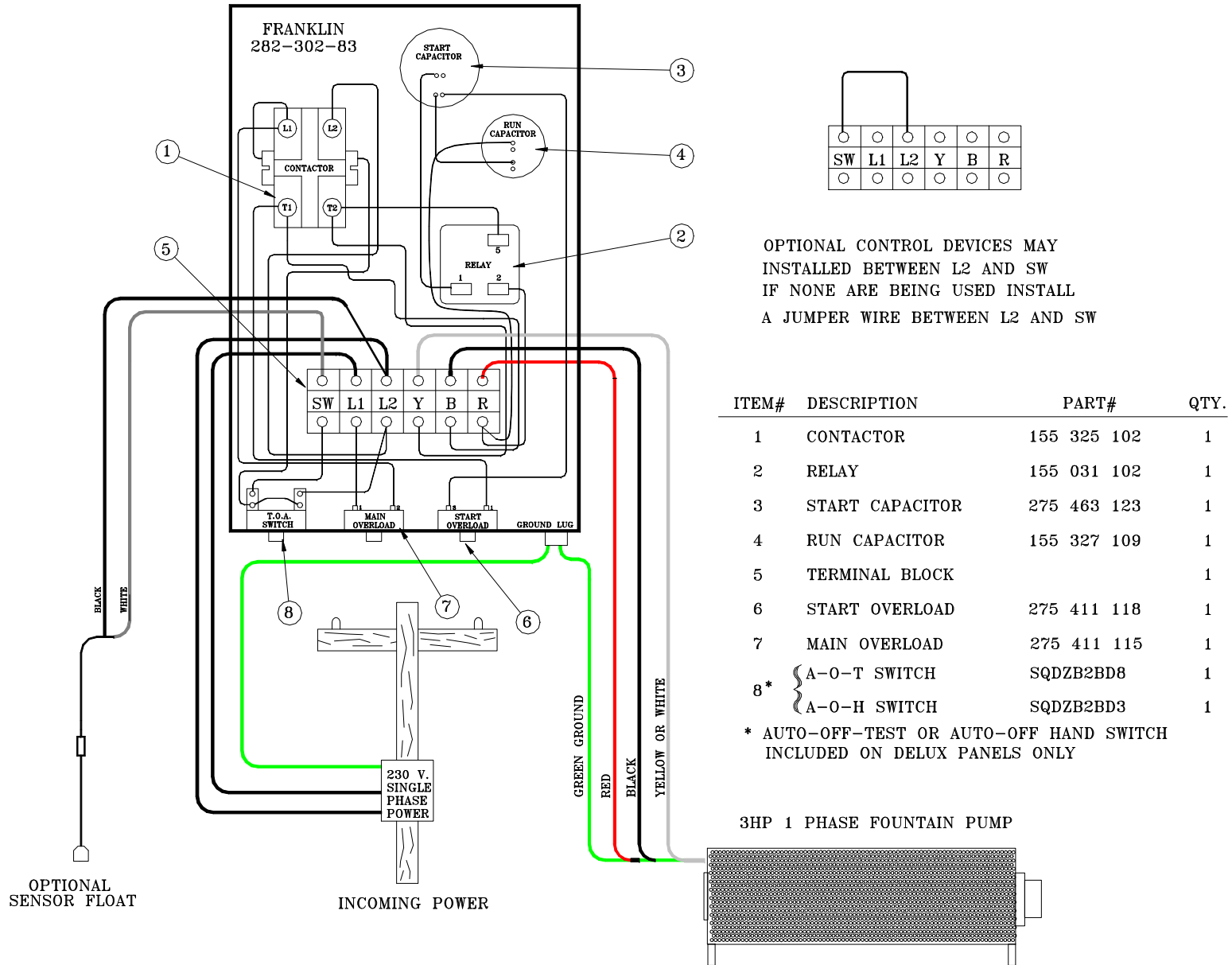


CARRY MANUFACTURING, INC. ELECTRICAL PANEL CONTROL BOX

3 H.P.
SINGLE PHASE
230 V.



**CARRY MANUFACTURING, INC.
ELECTRICAL PANEL CONTROL BOX**

WARNING!!

Verify that the power supply voltage matches the motor requirements. The wiring must be hooked up according to the drawing and all connections must be tight. Failure to do so, could result in damage to your system.

Incoming Power Source - Single phase, 230 volts

The incoming power is connected to L1, L2 and the ground lug on the control box.

Pump Connections - Wires are connected as follows: 1) Yellow/White wire to Y on terminal strip, 2) Black wire to B on terminal strip, and 3) Red wire to R on the terminal strip of the control box.

Float Connections - Wires are connected as follows: 1) White wire to SW on terminal strip, 2) Black wire to L2 on terminal strip.

CAUTION: Failure to ground the control frame can result in a serious electrical shock hazard if a circuit fault occurs.

07/17/13



Contact Carry Manufacturing for technical assistance.